


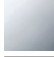

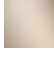


CL.1 Wall-mounted basin spout without pop-up waste - Dark Chrome

CL.1

13 800 705

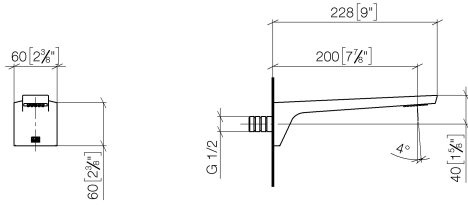


- 200mm projection
- fixed spout
- rectangular spray pattern with 40 individual jets
- hole diameter 37 mm
- lead-free
- 1/2" connection
- plug-link mounting
- max. flow 4.5 l/min
- This product can help a building meet the requirements of Green Building Rating Systems, e.g. LEED®, BREEAM®, DGNB

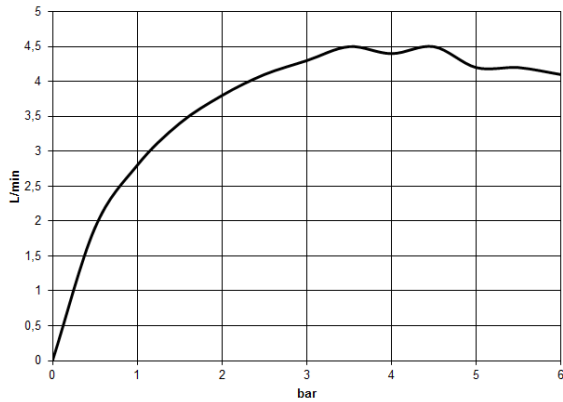
| | | |
|---|-------------------------------|---------------|
|  | Dark Chrome | 13 800 705-19 |
|  | Chrome | 13 800 705-00 |
|  | Brushed Platinum | 13 800 705-06 |
|  | Brushed Champagne (22kt Gold) | 13 800 705-46 |
|  | Champagne (22kt Gold) | 13 800 705-47 |
|  | Brushed Dark Platinum | 13 800 705-99 |

13 800 705

mm [inches]



Flow rate chart

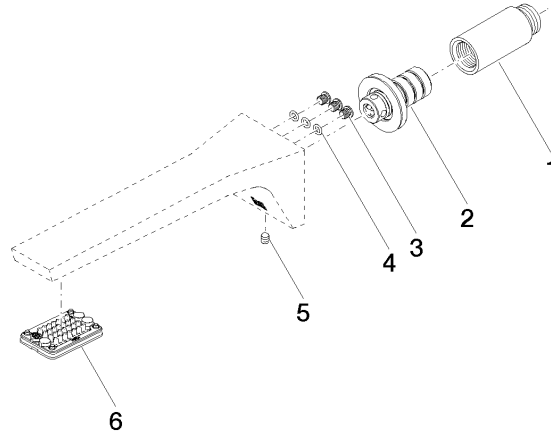


Certificates

IAPMO_N-4976. IAPMO_6397.

13 800 705

Parts for other finishes can be found here: [Chrome](#)



Spare parts list

| No. | Item Number | Name | Quantity used | Delivery time |
|-----|--------------------|------------|---------------|---------------|
| 1 | 09 24 03 081 10 90 | extension | 1 | 2 |
| 2 | 90 24 03 108 01 90 | nipple set | 1 | 2 |
| 3 | 09 30 30 113 20 90 | screw | 3 | 2 |
| 4 | 09 14 10 001 90 | seal | 3 | 2 |
| 5 | 90 31 11 004 00 90 | pin | 1 | 2 |
| 6 | 90 11 02 297 00 90 | aerator | 1 | 2 |